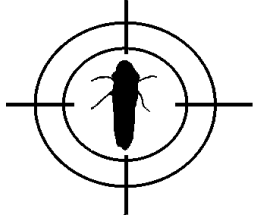


**Kern-Tulare**

# **GWSS Update**



*A project of the Glassy-winged Sharpshooter Task Force of Kern and Tulare Counties. Participants: Agricultural Commissioner Offices of Kern and Tulare Counties, California Department of Food and Agriculture, University of California-Cooperative Extension, U.S. Department of Agriculture (APHIS and ARS Divisions).*

**Contact:** Don Luvisi, project coordinator, (661) 868-6226 / [daluvisi@ucdavis.edu](mailto:daluvisi@ucdavis.edu)

**Web sites:** [www.kernag.com/kpp.htm](http://www.kernag.com/kpp.htm) and [www.co.kern.ca.us/farm/luvisi.htm](http://www.co.kern.ca.us/farm/luvisi.htm)

July 26, 2002

## **GWSS meeting set for July 31 in Delano**

An informational meeting to bring interested citrus and grape growers up to speed on GWSS developments in the Highway 65 corridor has been set for 10 a.m., Wednesday, July 31 in Delano.

The meeting will take place at the Elks Lodge, 708 Cecil Ave.

Citrus and grape growers are urged to attend this meeting to effect coordination of a timely treatment for grapes and citrus.

For more information, contact Larry Liggett at (661) 331-2062.

## **Pierce's Disease monitoring and control project resumes in Kern County for 2002**

The monitoring and control project for Pierce's Disease (PD) is underway once again this year, and the UC-Cooperative Extension of Kern County is now accepting samples for PD analysis.

Based on preliminary survey efforts, classic PD symptoms, such as leaf burn, persistent petioles and raisined fruit, have been observed in Red Globe, Crimson Seedless and Flame Seedless vines throughout the southern part of the county.

This year's project will encompass approximately 3,000 acres of vineyard in Kern County. Each individual vineyard surveyed and sampled will be treated as a case study to help researchers understand factors that influence disease spread and control.

We will revisit 12 vineyards that were surveyed for disease last year. Eleven of the 12 were found to have varying degrees of disease, ranging from less than 1% up to 30% of vines.

A profile will be created on each vineyard. It will include GPS coordinates, cultivar, vine age, irrigation regime, proximity to other host crops of GWSS and *Xylella fastidiosa*, pesticide use information when available, and presence and population levels of GWSS.

In each vineyard, every vine in every row will be observed, but in order to facilitate the project, only vines exhibiting severe symptoms (greater than 50% of the vine affected) will warrant sample collection. Samples will be sent to the CDFA Plant Pest Diagnostics Lab to confirm presence of *Xylella fastidiosa* (the bacterium that causes PD), with an enzyme-linked immunosorbent assay (ELISA).

Data on insect numbers will be provided by both the county agricultural commissioner's office and the California Dept. of Food and Agriculture in cooperation with the General Beale Road Pilot Project and the Area-wide Management Project currently in place to monitor GWSS spread.

Participating growers will receive all information collected. Vines that return with a positive test result must be removed immediately with the cooperation of the pest control advisor or vineyard manager.

Kern County provides a unique environment in which to map the incidence of PD, track the spread of the disease over time and investigate the interaction between the insect and the disease, given that both inoculum and the insects are present.

Such information will be useful to determine the economic impact of GWSS on California agriculture as well as provide fundamental data on epidemiological factors, including, but not limited to, host susceptibility to disease (cultivar, age), GWSS presence, proximity to preferred hosts of GWSS, proximity to alternative hosts of *Xylella* and individual grower insecticide and disease management programs.

If you have any questions regarding PD identification, sampling protocol and/or lab analysis, or would like more information about how to participate in this year's monitoring and control effort, please call the UCCE office at (661) 868-6223.

— Jennifer Hashim, UCCE Viticulture Farm Advisor

## **Kern's ag officials regulate bulk grape movement**

Harvesting of bulk grapes (grapes which have not been commercially packed, juiced, canned, crushed or dried) is under way.

Bulk loads of grapes still are considered to present a small but possible risk of carrying live GWSS.

County agriculture officials once again will regulate movement of unprocessed grapes products for the 2002 season.

Restrictions have been implemented to achieve pest risk mitigation commensurate with the level of risk. The protocol involves inspections and county certification of all grape loads shipped from counties with an infestation.

Growers will assure that a compliance certificate tag accompanies all bulk grape shipments. The certificate tag certifies that the load is free of any viable life stages of GWSS.

Last year, no GWSS were found.

The protocol will be evaluated at the end of the 2002 season.

Kern County agricultural biologists are actively enforcing California regulations and the conditions of each compliance agreement signed by growers. Biologists are currently surveying and trapping grape vineyards, monitoring harvesters, inspecting loads, and trapping for GWSS at wineries. They're also enforcing treatment protocols, checking manifests, and watching for any signs of GWSS in all grape harvesting activities.

— Kern County Agricultural Commissioner's Office

## **It's important to follow proper PD sampling protocol**

This is the time to be alert and on the lookout for suspect vines since hot weather will intensify Pierce's Disease symptoms.

We will take samples for lab analysis from now until the end of October. Please follow the protocol below as the organization of samples and length of time returning test results to you depend on these steps:

1. Sample each vine separately.
2. Mark each suspect/sampled vine in the field with flag tape or paint so you know where to return when test results are received.
3. Pull 8–10 leaves and petioles from symptomatic shoots.
4. Remove leaf blades and place only the petioles in a labeled bag (plastic is preferred).
  - a. Label should include: block ID, sample date, row number and vine number.
5. Bring samples to the UCCE office (1031 South Mount Vernon Avenue, Bakersfield) immediately or place in an ice chest or refrigerator until you can drop them off. Do not let samples bake in the sun or your vehicle.
6. Fill out the Pierce's Disease Lab Form provided at the counter and give samples and lab sheet to our office staff.
  - a. The lab form contains: ranch, location (give road or intersection), contact person, phone/fax number, sample date and areas for description and results.
  - b. In the description field please list: block ID, row number, vine number, cultivar and approximate vine age.
  - c. Be complete. This form is sent with your samples to CDFA and is also what you will receive back with results via fax for your records.
7. Take an extra (blank) copy of the lab sheet with you so that you may fill it out prior to dropping off additional samples.

Expect a turnaround time of about three to four days for test results. We would like you to bring samples in by Wednesday morning so that they may be shipped that afternoon. Samples brought in later in the week will be held over the weekend in cold storage and shipped out on Monday.

It is imperative that vines are removed immediately following a positive test result in order keep the GWSS population free of the bacterium that causes PD.

Please take advantage of this service because it is currently provided to you at no expense.

— Jennifer Hashim,  
*UCCE Viticulture Farm Advisor*

## **Find GWSS program maps online**

Maps for the Kern Pilot Project and Area-wide Management Program are available online at:  
<ftp://ftp.netxn.com/pub/agcom/gwss/fromCDFA/>. (FYI: These are large files.)

## **Special thanks**

A special thanks to the California Table Grape Commission and the GWSS Task Force of Kern and Tulare Counties for their support of this newsletter.

## **Fax changes? E-mail?**

If you'd prefer to receive *GWSS Update* via e-mail, or to receive it at a different fax number, please contact Catherine Merlo at (661) 588-0561 or at [cmm55@aol.com](mailto:cmm55@aol.com).

###