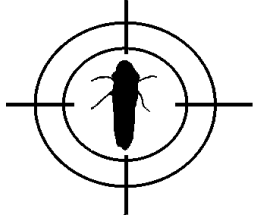


Kern-Tulare

GWSS Update



*A project of the Glassy-winged Sharpshooter Task Force of Kern and Tulare Counties.
Participants: Agricultural Commissioner Offices of Kern and Tulare Counties, California
Department of Food and Agriculture, University of California-Cooperative Extension,
U.S. Department of Agriculture (APHIS and ARS Divisions).*

Contact: Don Luvisi, project coordinator, (661) 868-6226 / daluvisi@ucdavis.edu

Web sites: www.kernag.com/kpp.htm and www.co.kern.ca.us/farm/luvisi.htm

June 8, 2002

All-grower meeting set for June 11 in Delano to discuss recent GWSS finds in northern Kern County

Recent finds of the glassy-winged sharpshooter in the northeastern part of Kern County—Delano, McFarlane, Richgrove—and the impact on growers and related operations will be discussed at a meeting Tuesday, June 11.

The all-grower meeting will begin at 4 p.m. at the Delano Elks Lodge at 708 Cecil Avenue in Delano.

The Kern-Tulare GWSS Task Force reminds growers that GWSS is on the move. USDA and CDFA scientists have put together a plan of action to control this pest. Growers play an important role in addressing this serious problem, and their cooperation is essential in implementing an attack on GWSS.

Tulare County resumes GWSS control program

The Tulare County Agricultural Commissioner's Office has once again started up its GWSS control program.

Last year, it was felt that the mid-April start-up date was premature. Our surveys showed artificially low numbers of infested properties in Porterville and Terra Bella, and the subsequent treatment of those properties did not kill sufficient numbers of adults to prevent a late season build up of GWSS.

As a result, we delayed survey in the Porterville area until mid-May 2002. So far, we have detected approximately 250 infested properties, and treatments with Carbaryl began on June 5.

We're quite encouraged with the timing this year. Not only do we have greater confidence that we are seeing a truer picture of the population, but the population is almost entirely made up of nymphs (a more susceptible stage for treatment).

We are investigating, with the help of Dr. Beth Grafton-Cardwell, the possibility of using a different material for the second treatment this year in hopes of securing even better control.

Back in February we conducted limited treatments with MERIT along the Highway 65 overpasses, Scenic Hill, and several other “heat island” areas. It had been noted in past seasons that GWSS was congregating in these sites and then moving into the surrounding neighborhoods and groves. A review of these areas has shown dramatic reductions in GWSS populations.

Our detection program for GWSS continues to show that this pest is still limited to the area between Porterville and Terra Bella. As soon as we have completed our survey of Porterville, we will move on to Terra Bella and Magnolia quarantine areas.

Our extensive trapping program in urban and high risk areas (nurseries, packing houses, new developments, etc.) is in place and has not indicated any new finds to date. As with last year, we will be conducting surveys along pathways for GWSS entry, focusing on those roads and highways associated with the movement of bulk citrus loads into Tulare County.

*—Dennis Haines, agricultural biologist,
Tulare County Agricultural Commissioner's Office*

New e-mail address for Kern's ag department

The Kern County Department of Agriculture and Measurement Standards has a new e-mail address: agcomm@co.kern.ca.us

###