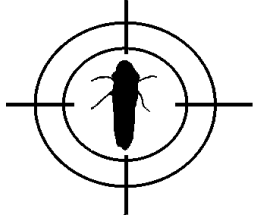


Kern-Tulare

GWSS Update



A project of the Glassy-winged Sharpshooter Task Force of Kern and Tulare Counties. Participants: Agricultural Commissioner Offices of Kern and Tulare Counties, California Department of Food and Agriculture, University of California-Cooperative Extension, U.S. Department of Agriculture (APHIS and ARS Divisions).

Contact: Don Luvisi, project coordinator, (661) 868-6226 / daluvisi@ucdavis.edu

Web sites: www.kernag.com/kpp.htm and www.co.kern.ca.us/farm/luvisi.htm

November 10, 2001

GWSS Task Force to meet Nov. 14

The Kern-Tulare GWSS Task Force will meet Wednesday, Nov. 14 at 1:30 p.m. at the Kern County Agricultural Commissioner's Office in Bakersfield.

Pierce's Disease Symposium to be held Dec. 5-7

A Pierce's Disease Research Symposium will be held Dec. 5-7 at the Coronado Island Marriott Resort in San Diego. Information is available at www.cdffa.ca.gov/phpps/pdcp. Click on "Research symposium."

Lessons learned from the General Beale Pilot Project

Among the lessons we've learned from the General Beale Pilot Project:

❖ **General management practices influence the population levels of GWSS.**

- A) Traditional pesticide programs lower GWSS levels.
- B) Integrated pest management programs tend to have higher GWSS populations.
- C) Organic production will be a challenge to GWSS control *in areas where Pierce's*

Disease (PD) is known to exist. The practice of growing grapes utilizing organic strategies for GWSS may not be feasible. Some of the factors that need to be considered are:

- Limited number of materials are available for organic production.
- Will require repeat applications for marginal control.
- Pyganic and Neem oil \$85/acre/application.
- Surround \$52/acre/application.
- Surround + Pyganic \$86/acre/application.

-- Don Luvisi

Tulare County continues to treat infected properties

The Treatment Program for Porterville and Terra Bella continues. We anticipate that all infested properties should be treated by the end of next week. A total of approximately 1,800 properties (including both infested and adjacents) will have been sprayed with carbaryl.

The recent surveys around Magnolia failed to turn up any live GWSS. These groves were last treated in July.

Surveys are also being conducted of commercial groves in the quarantined areas to assure that bulk citrus loads leaving Tulare County do not contain GWSS. So far this fall, our inspectors have rejected 18 loads of “yellow tagged” navels originating in Kern County. Most are coming from groves just outside the General Beale Project Area. All loads have either been held under quarantine until all GWSS are dead, or returned to Kern County.

Additional inspectors have been hired to help with the increasing numbers of bulk navels being shipped into Tulare County.

— Tulare County Agricultural Commissioner's Office

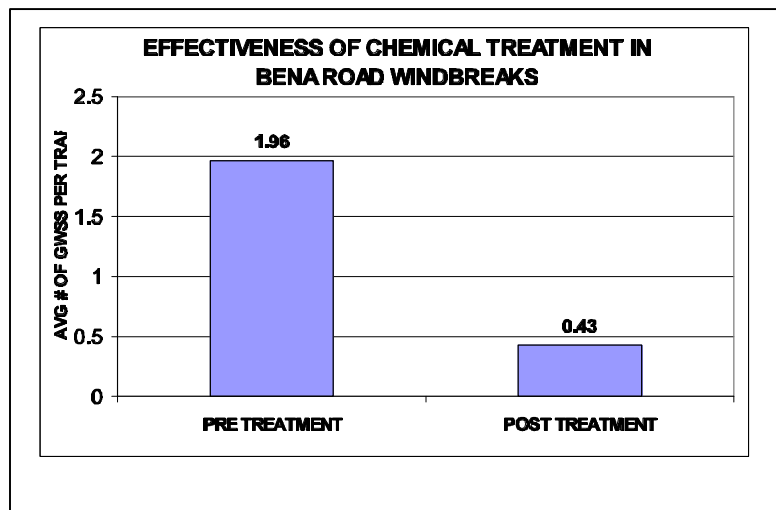
Post-treatment levels in Bena Road show GWSS drop

Chemical treatments were applied in the Bena Road windbreaks Oct. 26–28.

Previous treatments were applied in the citrus crops. While a decrease in GWSS populations was observed in those crops, an increase was observed in the windbreaks adjacent to the citrus trees during that time. There now is a decrease in the windbreak trees due to the recent applications in the windbreaks shown in the graph.

An average number of adult GWSS per trapping system before and after treatments shows the effectiveness of the chemical applications.

Currently, a low count has been observed in the entire area of Bena Road.



— CDFA

###