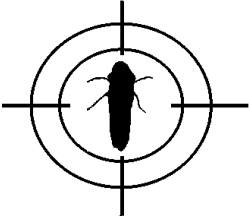


Kern-Tulare

GWSS Update



A project of the Glassy-winged Sharpshooter Task Force of Kern and Tulare Counties. Participants: Agricultural Commissioner Offices of Kern and Tulare Counties, California Department of Food and Agriculture, University of California-Cooperative Extension, U.S. Department of Agriculture (APHIS and ARS Divisions).

Contact: Don Luvisi, project coordinator, (661) 868-6226 / daluvisi@ucdavis.edu
Web sites: www.kernag.com/kpp.kpp.htm and www.co.kern.ca.us/farm/farm.htm

August 25, 2001

GWSS Task Force to meet

The Kern-Tulare GWSS Task Force will meet Thursday, Sept. 6 at 1:30 p.m. at the Kern Agricultural Commissioner's Office in Bakersfield.

GWSS survey begins next week on Highway 65

Beginning Monday, Aug. 27, Kern County agricultural biologists, in conjunction with workers from the California Conservation Corps, will begin a systematic survey for GWSS along the Highway 65 citrus corridor within Kern County.

The survey will consist of thorough inspections of every citrus orchard within a one-mile section along both the east and west sides of Highway 65. Inspectors will be searching for signs of all GWSS life stages. They will begin their survey at the county line and work southward to 7th Standard Road.

— *Kern County Agricultural Commissioner's Office*

Pierce's Disease survey expanded in pilot project area

Along with the CDFA and help from a dozen members of the California Conservation Corps, we are expanding the Pierce's Disease (PD) survey to include approximately 400 additional acres of grapes within the General Beale Road Pilot Project.

The focus is on Red Globe, since it is the most susceptible variety in the area. The distribution of Red Globe vineyards throughout the project area will give us an opportunity to understand disease incidence in a defined area. If PD is found, the survey may also give us an idea of where further spread might be expected. The results of this survey will be complete within the next few weeks.

If you manage a Red Globe vineyard within the defined pilot project area and are interested in the survey protocol, sampling methods and/or results, please call the UCCE office at (661) 868-6223 for more information.

— *Jennifer Hashim, UCCE Viticulture Farm Advisor*

Bena Road adult GWSS decline; yellow sticky traps support field observations

GWSS adult numbers appear to be in a decline in both citrus and grapes following the citrus treatments in the Bena Road area.

Trap averages in Bena Road citrus have dropped from a high of 16 GWSS adults per trap per day down to three.

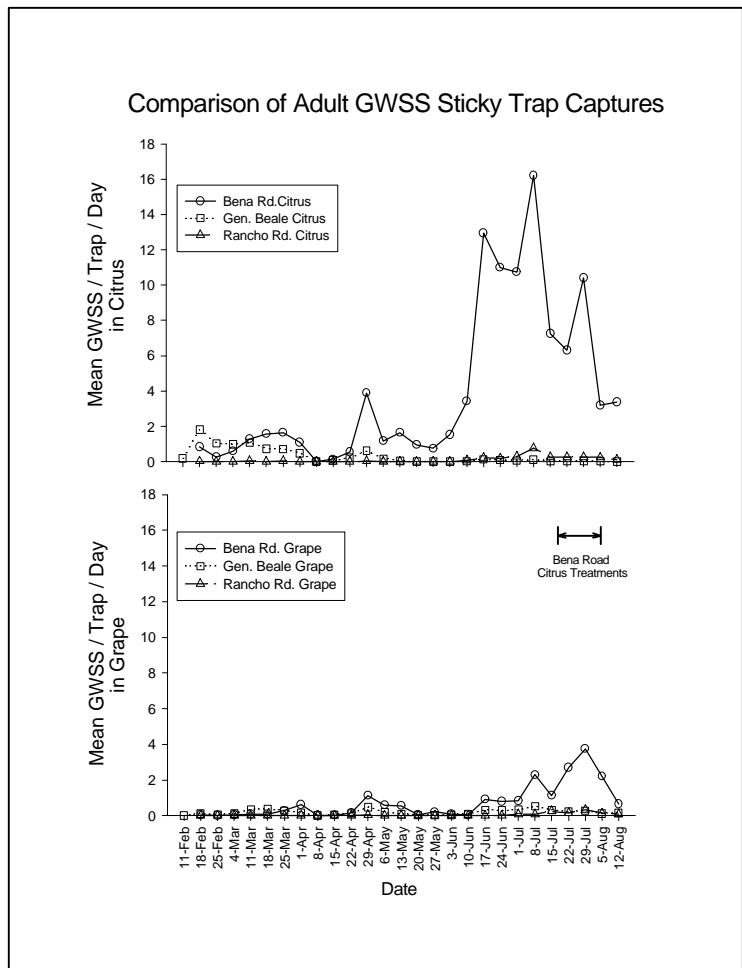
The same trend was observed in Bena Road grapes with a drop from a high of four GWSS adults per trap per day down to less than one (see graph).

GWSS adult numbers in General Beale Road citrus have remained flat with an average capture of less than 0.05 GWSS adults per trap per day.

Captures in Rancho/David Road area citrus have also remained relatively flat with averages around 0.2 GWSS adults per trap per day. There was a slight peak in captures the week of July 8 with an average of 0.7 GWSS adults per trap per day (see graph).

The effectiveness of these yellow sticky traps has often been questioned. To date, yellow sticky trap data continue to provide close correlation to our direct

observations in the field. GWSS adults appear to be attracted to the yellow traps throughout the spring and summer. It is also interesting to note that many nymphs have been observed on these traps. Without wings to fly, these nymphs have to crawl or jump onto the traps.



— USDA scientists

###