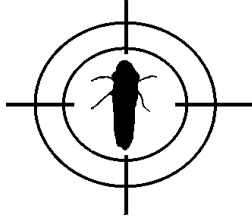


Kern-Tulare

GWSS Update



A project of the Glassy-winged Sharpshooter Task Force of Kern and Tulare Counties. Participants: Agricultural Commissioner Offices of Kern and Tulare Counties, California Department of Food and Agriculture, University of California-Cooperative Extension, U.S. Department of Agriculture (APHIS and ARS Divisions).

Contact: Don Luvisi, project coordinator, (661) 868-6226 / daluvisi@ucdavis.edu
Web sites: www.kernag.com/kpp.htm and www.co.kern.ca.us/farm/luvisi.htm

June 1, 2002

Northern Zone sees expanded activity in Kern's GWSS Area-wide Management Program

The northern area is the first action zone to come under the management of the Kern County GWSS Area-wide Management Program.

USDA-APHIS, the Kern County Department of Agriculture, the California Department of Food and Agriculture, UC-Cooperative Extension Service and the Kern-Tulare GWSS Task Force have teamed up in a focused effort and are implementing the plan.

The action follows successful guidelines tested and evaluated by USDA-APHIS in the General Beale Road Pilot Project over the past two years.

All permitted citrus, which included 97 fields and 9,761 acres in the zone, was infield sampled between Feb. 6 and March 25. Of the 97 groves, 15 (covering 1,647 acres) exceeded the action threshold of one GWSS adult per tree.

The groves were scheduled with grower cooperation for foliar treatment applications. All foliar treatments were applied by April 13.

Post-treatment sampling of the treated groves showed significant sharpshooter reductions:

- A 97.48% reduction was achieved on 887 acres treated with Evergreen®.
- A 100% reduction was seen on 176 acres treated with Baythroid®.
- A 100% reduction was produced on 584 acres treated with Lannate®.

These results are encouraging and show that these compounds, properly applied, effectively reduce numbers of sharpshooter adults, even at relatively low densities.

Additionally, all applications of the systemic compound, Admire®, have been applied within the zone. This was completed by May 9.

The Northern Zone is the first area of expanded activity in the area-wide program. The zone is located east of Bakersfield and includes portions of Edison Highway, Pepper Road and Breckenridge Road.

Plans are underway to sequester funding and expand control activity into the Central, Southern and Western areas of Kern County in 2003.

—Bob Richard, USDA Area-Wide Program Coordinator

Kern-Tulare GWSS Task Force to meet June 5

The GWSS Task Force of Kern and Tulare Counties will meet at 1:30 p.m., Wednesday, June 5 at the Kern County Agricultural Commissioner's Office in Bakersfield (1001 S. Mt. Vernon Avenue).

Agenda items include:

1. Funding and Budget Update—CDFA/USDA/CAC
2. GWSS Pilot Project Update—USDA
3. GWSS Highway 65 Update—USDA
4. GWSS Area-Wide Program Update—Kern CAC
5. Pierce's Disease Compensation Program Update CDFa/CAC
6. Pierce's Disease Survey Update—Kern UCCE
7. Tulare County GWSS/PD Update—Tulare CAC/Tulare UCCE
8. Statewide Task Force Tour Report
9. Additional agenda items (time permitting)

Special thanks

A special thanks to the California Table Grape Commission and the GWSS Task Force of Kern and Tulare Counties for their support of this newsletter.

###