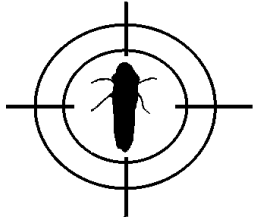


Kern-Tulare

GWSS Update



A project of the Glassy-winged Sharpshooter Task Force of Kern and Tulare Counties. Participants: Agricultural Commissioner Offices of Kern and Tulare Counties, California Department of Food and Agriculture, University of California-Cooperative Extension, U.S. Department of Agriculture (APHIS and ARS Divisions).

Contact: Don Luvisi, project coordinator, (661) 868-6226 / daluvisi@ucdavis.edu

Web sites: www.kernag.com/kpp.htm and www.co.kern.ca.us/farm/luvisi.htm

May 25, 2002

GWSS program activity increases along Highway 65

Recent finds of GWSS north of Seventh Standard Road between Highway 65 and the Famoso-Porterville Highway have expanded our efforts to manage the pest in this area.

Historically, over the past two years, various life forms of the insect have been found at different locations. Recent finds of adult GWSS west of Highway 65 are a major concern, since they may indicate an expansion of a residual, low-level population that continues to manifest itself on available hosts.

We have intensified the trapping, utilizing yellow sticky traps in three areas that have historically detected GWSS at low population levels. These traps are now set up on a one-fourth-mile grid and serviced weekly.

In addition to this attempt to delineate the infestation in those three areas, the potential of a low level population that is extremely difficult to detect may exist outside these identified areas. Field crews conducting in-field sampling have been unable to find any life forms of the pest. Yet, we have confirmation of adults on sticky tape in grapes adjacent to citrus.

This should not be a surprise since we know the insect seems to prefer this habitat; however, the fact we cannot discover GWSS in citrus in this area is a challenge. We will continue to monitor utilizing in-field sampling in these grape-citrus interface areas.

In addition to this intense sampling, we will place additional sticky traps in these interface areas at one-eighth-mile intervals where the grape production begins west of Highway 65. The combination of field

sampling and the continuous monitoring utilizing the sticky traps in these interface zones will provide much-needed data on what may be happening with GWSS in the entire area.

Plans have been formalized to begin treatments in the areas that have reported GWSS this year. We are utilizing past treatment histories, reports from any 2001 finds and more recent field data from 2002 to implement this management approach.

Since this area is north of the Area-Wide Pest Management Program implemented in Kern, the approach is to prevent a population of GWSS from increasing, from potentially posing as a risk to fruit shipment out of the area, and from vectoring of any disease.

Additionally, if growers find any form of GWSS in the Highway 65 area, we ask that you call the GWSS Laboratory at 661-363-7025, so that a quick follow-up to this information can be utilized to better understand this infestation.

—Lloyd Wendel, USDA Program Director

Kern-Tulare GWSS Task Force to meet June 5

The GWSS Task Force of Kern and Tulare Counties will meet at 1:30 p.m., Wednesday, June 5 at the Kern County Agricultural Commissioner's Office in Bakersfield (1001 S. Mt. Vernon Avenue).

Agenda items include:

1. Funding and Budget Update—CDFA/USDA/CAC
2. GWSS Pilot Project Update—USDA
3. GWSS Highway 65 Update—USDA
4. GWSS Area-Wide Program Update—Kern CAC
5. Pierce's Disease Compensation Program Update—CDFA/CAC
6. Pierce's Disease Survey Update—Kern UCCE
7. Tulare County GWSS/PD Update—Tulare CAC/Tulare UCCE
8. Statewide Task Force Tour Report
9. Additional agenda items (time permitting)

Find GWSS program maps online

Maps for the Kern Pilot Project and Area-wide Management Program are available online at:
<ftp://ftp.netxn.com/pub/agcom/gwss/fromCDFA/>. (FYI: These are large files.)

###